



**Catalogue  
2024**

# Crevel USA

**Our commitment is to deliver exceptional service not only to you but also to your customers.**

••

**We provide your company with the finest selection of market-leading and renowned brands.**

**With a dedicated team stationed along the East Coast, we ensure that you receive expert guidance, timely deliveries, and excellent condition for every order.**

## **Crevel Distribution Inc**

Hanover, MD

[administration@crevelusa.com](mailto:administration@crevelusa.com)

Office +1 443 873 6651

WhatsApp +1 240 825 6325



# Categories

Candy

Drinks

Grocery

Home care

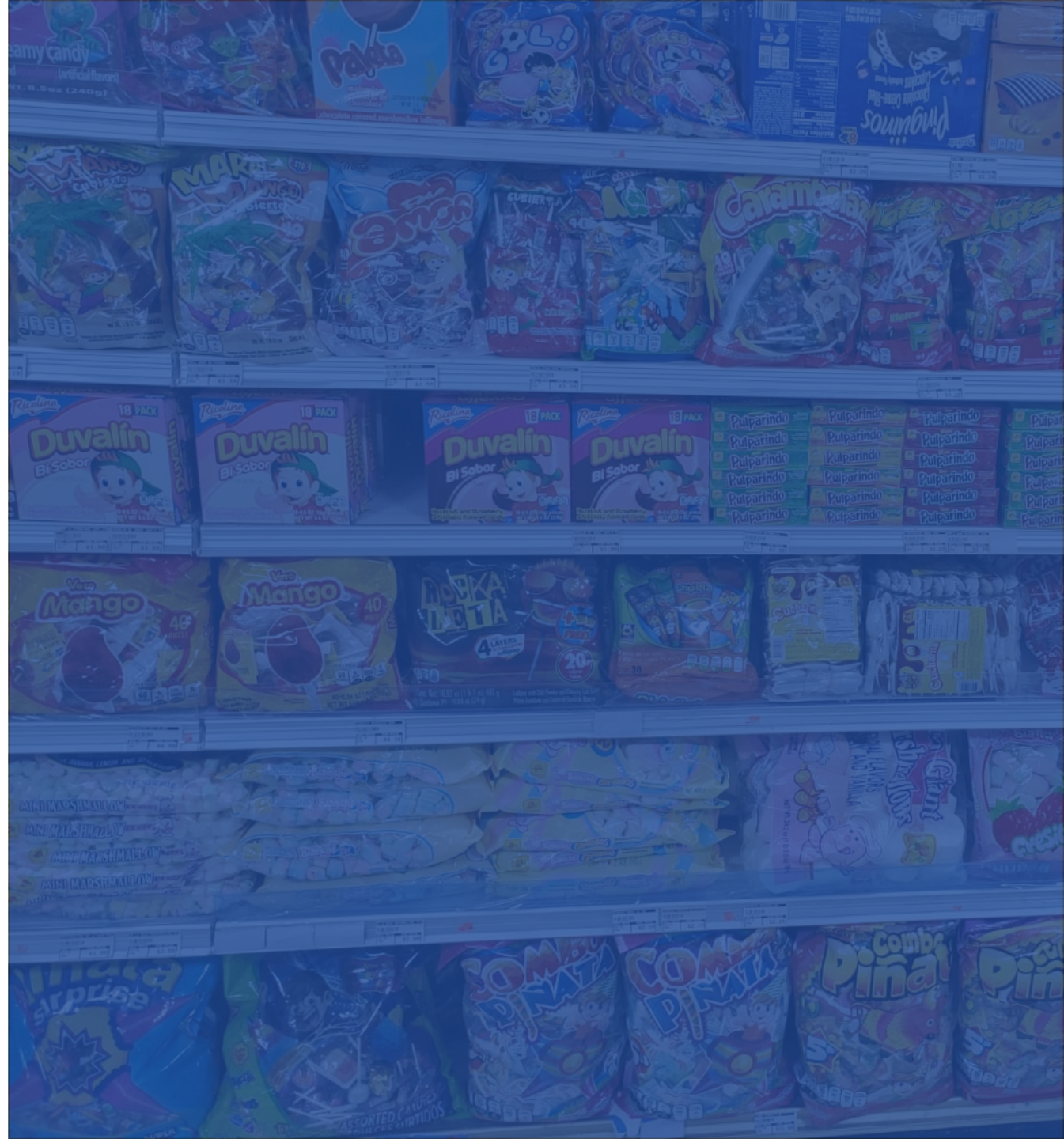
Personal care







# Candy







**BONDY 8/6 PZ**  
**CARS**  
**SKU: 13120**  
**CASE: 8 UNITS**



**BONDY 8/6 PZ**  
**FROZEN**  
**SKU: 13115**  
**CASE: 8 UNITS**



**BONDY 8/6 PZ HOT WHEELS**  
**MEGA HUEVO**  
**SKU: 10802**  
**CASE: 8 UNITS**



**BONDY 8/6 PZ**  
**PRINCESAS**  
**SKU: 13116**  
**CASE: 8 UNITS**



**BONDY 8/6 PZ**  
**TOY STORY**  
**SKU: 13121**  
**CASE: 8 UNITS**



**BONDY 8/6 PZ PAW PATROL**  
**MEGA HUEVO**  
**SKU: 11214**  
**CASE: 8 UNITS**







**DE LA ROSA 6/4 LBS**  
 PIÑATA MIX  
 SKU: 10009  
 CASE: 6 UNITS



**SONRICS 5/5 LBS**  
 PIÑATA SURPRISE RTD  
 SKU: 10367  
 CASE: 5 UNITS



**ALTENO 3/11 LBS**  
 PIÑATERO FELIZ CUMPLEAÑOS  
 SKU: 11332  
 CASE: 3 UNITS



**ALTENO 6/5 LBS**  
 PIÑATERO MIX CANDY  
 SKU: 11334  
 CASE: 6 UNITS



**CANELS 4/9 LBS**  
 EL PIÑATERO MEGA MIX  
 SKU: 10601  
 CASE: 12 UNITS



**CANELS 6/4 LBS**  
 EL PIÑATERO  
 SKU: 13655  
 CASE: 6 UNITS



**BUBBALOO 50 UN**  
 MORA AZUL (32 DISP)  
 SKU: 10337  
 CASE: 32 UNITS



**BUBBALOO 50 UN**  
 PLÁTANO (32 DISP)  
 SKU: 10339  
 CASE: 32 UNITS





**ICEE 12/2.82 OZ LIQUID CENTER BUBBLE GUM PEG BAG**  
**SKU: 13991**  
**CASE: 12 UNITS**



**ICEE 12/4 OZ FRUIT SOUR PEG BAG**  
**SKU: 13990**  
**CASE: 12 UNITS**



**HUEVITOS DE PALOMA 18/19 OZ CHOCOLATE**  
**SKU: 13705**  
**CASE: 18 UNITS**



**BUBULUBU 12/8 PZ**  
**SKU: 10628**  
**CASE: 12 UNITS**



**DUVALIN 24/18 PZ AVE-VAI**  
**SKU: 10622**  
**CASE: 24 UNITS**



**DUVALIN 24/18 PZ FRE-VAI**  
**SKU: 10624**  
**CASE: 24 UNITS**



**DUVALIN 24/18 PZ AVE-FRE**  
**SKU: 10623**  
**CASE: 24 UNITS**



**DUVALIN 24/18 PZ TRI SABOR**  
**SKU: 12853**  
**CASE: 24 UNITS**





**MINI PALETA PAYASO 12/15 PZ**  
**SKU: 10627**  
**CASE: 12 UNITS**



**PALETA PAYASO 6/10 PZ**  
**SKU: 13298**  
**CASE: 6 UNITS**



**RICOLINO 4/1.5 KG**  
**RICOFIESTA**  
**SKU: 12165**  
**CASE: 4 UNITS**



**RICOLINO 6/4.4 OZ**  
**PANDITAS CLASICAS**  
**SKU: 12402**  
**CASE: 6 UNITS**



**VAQUITA 12/21 UN**  
**BAG POP**  
**SKU: 10360**  
**CASE: 12 UNITS**



**VAQUITA 20/11 OZ**  
**CHICLOSO CARAMEL**  
**SKU: 13897**  
**CASE: 20 UNITS**



**VAQUITA 50/9 UN**  
**TIRA POP**  
**SKU: 13720**  
**CASE: 50 UNITS**



**CORONADO 50/10 PZ**  
**PALETON TIRA**  
**SKU: 10625**  
**CASE: 50 UNITS**







**MARA 4/10 LBS**  
COMBO PIÑATA  
**SKU:** 10671  
**CASE:** 4 UNITS



**MARA 8/5 LBS**  
COMBO PIÑATA  
**SKU:** 10672  
**CASE:** 8 UNITS



**MARA 8/40 PZ**  
MARACOLA  
**SKU:** 12812  
**CASE:** 8 UNITS



**MARA 8/40 PZ**  
PALEAMOR  
**SKU:** 12654  
**CASE:** 8 UNITS



**MARA 8/40 PZ**  
ELOTE CUBIERTO CHILE  
**SKU:** 12816  
**CASE:** 8 UNITS



**MARA 8/40 PZ**  
MANZANA ROJA RELLENA  
**SKU:** 12815  
**CASE:** 8 UNITS



**MARA 8/40 PZ**  
SANDIA CUBIERTA CON CHILE  
**SKU:** 12652  
**CASE:** 8 UNITS





**MARA 8/40 PZ**  
MANGO KING  
**SKU:** 13272  
**CASE:** 8 UNITS



**VERO 7/40 PZ PALETA**  
BANDA MIX FUEGO  
**SKU:** 12195  
**CASE:** 7 UNITS



**VERO 7/40 PZ**  
PALETA MANITA  
**SKU:** 12084  
**CASE:** 7 UNITS



**VERO 7/40 PZ**  
PINTA AZUL  
**SKU:** 13078  
**CASE:** 7 UNITS



**ROCKALETA 10/20 UN**  
BOLSA  
**SKU:** 10368  
**CASE:** 10 UNITS



**ROCKALETA 8/30 UN**  
DISPLAY  
**SKU:** 10369  
**CASE:** 8 UNITS



**SAFARI 20/10 UN**  
CUCHARON GRANDE  
**SKU:** 11449  
**CASE:** 20 UNITS



**SAFARI 6/50 UN** BAMBURINDO  
BANDERILLA VITROLERO  
**SKU:** 10968  
**CASE:** 6 UNITS







**MAZAPAN 20/30 UN**  
**DISPLAY**  
**SKU: 10150**  
**CASE: 30 UNITS**



**PULPARINDO 32/20 UN**  
**DISPLAY**  
**SKU: 10012**  
**CASE: 32 UNITS**



**PULPARINDO 32/20 UN**  
**WATERMELON DISPLAY**  
**SKU: 10331**  
**CASE: 32 UNITS**



**PULPARINDO 32/20 UN**  
**XTRA-SPICY DISPLAY**  
**SKU: 10013**  
**CASE: 32 UNITS**



**MONTES 24/6.5 OZ**  
**RICOS BESOS**  
**SKU: 11185**  
**CASE: 24 UNITS**



**MONTES 24/6.5 OZ**  
**SUPER NATILLA**  
**SKU: 11184**  
**CASE: 24 UNITS**



**PELON PELO RICO 6/36 UN**  
**DISPLAY**  
**SKU: 10365**  
**CASE: 6 UNITS**



**PELON PELO RICO 24/12 UN**  
**BOLSA**  
**SKU: 10363**  
**CASE: 24 UNITS**







**SAFARI 16/24 PZ**  
**PANDA SANDWICH SURTIDO**  
**SKU: 13597**  
**CASE: 16 UNITS**



**JELLY TROPICAL TREASURE 24/20 UN**  
**BAG TROPICUPS**  
**SKU: 13714**  
**CASE: 24 UNITS**



**JELLY TROPICAL TREASURE 6/100 UN**  
**JAR TROPICUPS**  
**SKU: 13712**  
**CASE: 6 UNITS**



**JELLY TROPICAL TREASURE 18/50 UN**  
**BAG TROPICUPS**  
**SKU: 13713**  
**CASE: 18 UNITS**



**MARSHMALLOW 15/14 OZ**  
**BRAIDED**  
**SKU: 10204**  
**CASE: 15 UNITS**



**MARSHMALLOW 15/14 OZ**  
**HEART SHAPED**  
**SKU: 10292**  
**CASE: 15 UNITS**



**TROPIQUE 24/3.5 OZ**  
**MARSHMALLOW CONE ASSORTED**  
**SKU: 13887**  
**CASE: 24 UNITS**



**TROPIQUE 24/3.5 OZ**  
**MARSHMALLOW CONE BLUEBERRY**  
**SKU: 13889**  
**CASE: 24 UNITS**





**MARSHMALLOW 15/12 OZ**  
GIANT  
**SKU:** 13307  
**CASE:** 15 UNITS



**MARSHMALLOW 15/12 OZ**  
PINK & WHITE DRUMS  
**SKU:** 10294  
**CASE:** 15 UNITS



**MARSHMALLOW 10/25 OZ**  
EXTRA GIANT  
**SKU:** 10202  
**CASE:** 10 UNITS



**MARSHMALLOW 12 BGS**  
MINIATURE  
**SKU:** 10203  
**CASE:** 12 UNITS



**MARSHMALLOW 4/30 UN**  
MINI MINI BIANCHI  
**SKU:** 10001  
**CASE:** 4 UNITS

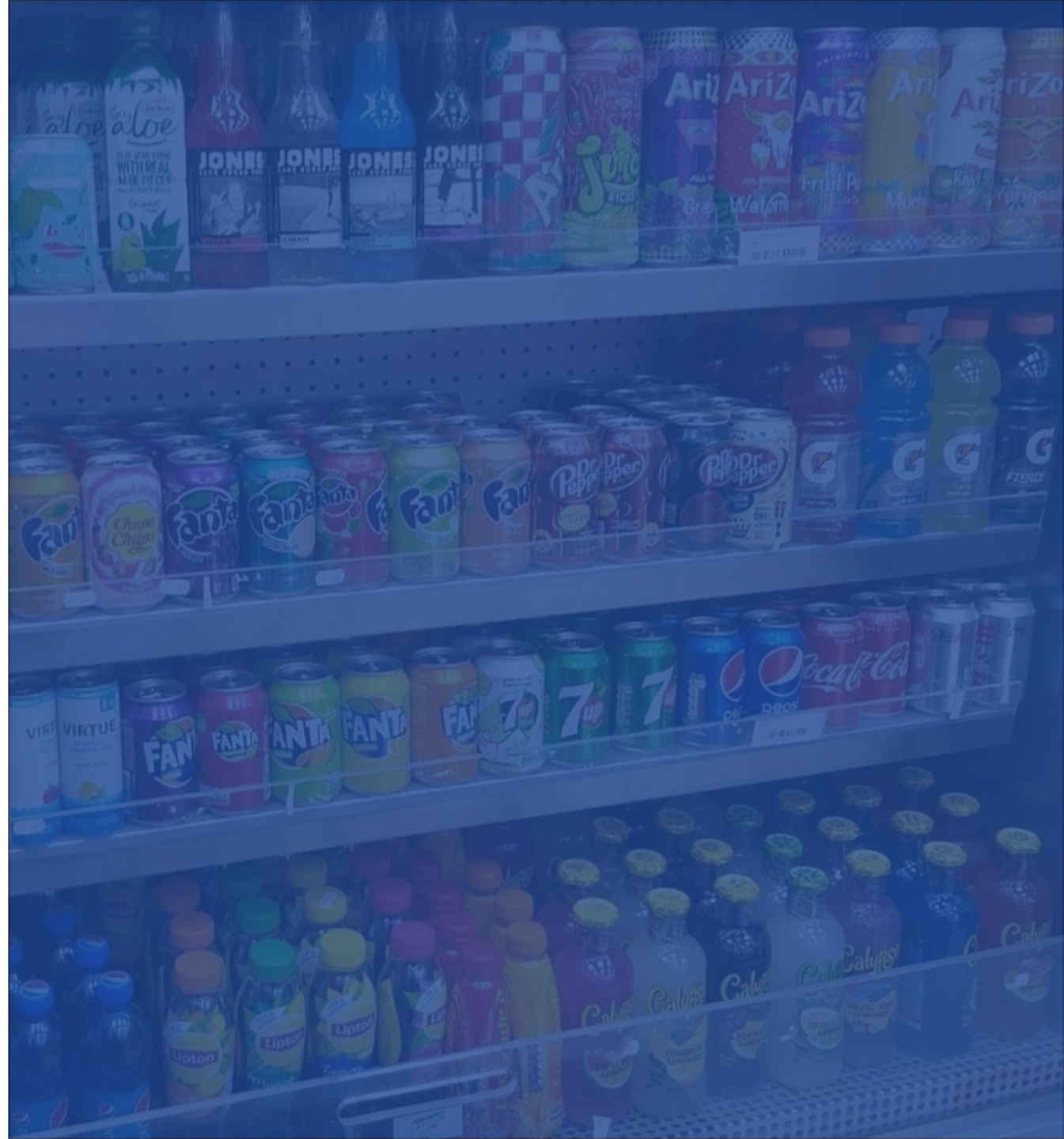


**MARSHMALLOW 5/29 OZ**  
SUPER GIANT HEART SHAPED  
**SKU:** 10830  
**CASE:** 5 UNITS

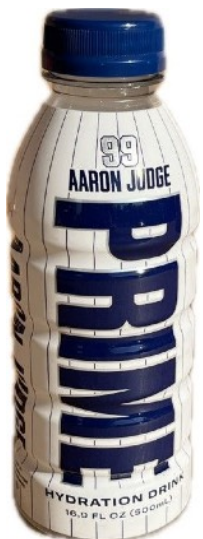




# Drinks







**PRIME 24/500 ML**  
**AARON JUDGE**  
**SKU: 14011**  
**CASE: 24 UNITS**



**PRIME 24/500 ML**  
**WWE**  
**SKU: 14012**  
**CASE: 24 UNITS**



**ARIZONA 24/23 OZ**  
**MUCHO MANGO**  
**SKU: 13907**  
**CASE: 24 UNITS**



**ARIZONA 24/23 OZ**  
**WATERMALON**  
**SKU: 13909**  
**CASE: 24 UNITS**



**GATORADE 28/20 OZ**  
**ASSORTED PACK**  
**SKU: 13992**  
**CASE: 28 UNITS**



**JUMEX 12/33.8 OZ**  
**TETRA PEACH NECTAR**  
**SKU: 12120**  
**CASE: 12 UNITS**



**JUMEX 12/33.8 OZ**  
**TETRA PINEAPPLE NECTAR**  
**SKU: 12121**  
**CASE: 12 UNITS**



**JUMEX 12/33.8 OZ**  
**TETRA APPLE NECTAR**  
**SKU: 12118**  
**CASE: 12 UNITS**



**JUMEX 12/33.8 OZ**  
**TETRA MANGO NECTAR**  
**SKU: 12117**  
**CASE: 12 UNITS**



**JUMEX 12/16 OZ**  
**MANGO**  
**SKU: 12201**  
**CASE: 12 UNITS**



**JUMEX 24/11.3 OZ**  
**MANGO NECTAR**  
**SKU: 12128**  
**CASE: 24 UNITS**





**SQUARE 12/18 OZ**  
CARROT MANGO  
**SKU:** 10985  
**CASE:** 12 UNITS



**SQUARE 12/18 OZ**  
CARROT ORANGE  
**SKU:** 10986  
**CASE:** 12 UNITS



**SQUARE 8/25.4 OZ**  
CARROT MANGO  
**SKU:** 10982  
**CASE:** 8 UNITS



**SQUARE 8/25.4 OZ**  
CARROT PINEAPPLE  
**SKU:** 10984  
**CASE:** 8 UNITS



**TROPIQUE 12/32 OZ**  
LEMON JUICE  
**SKU:** 11782  
**CASE:** 12 UNITS



**TROPIQUE 6/1.5 LT**  
MANGO JUICE  
**SKU:** 12338  
**CASE:** 6 UNITS



**TROPIQUE 24/16.9 OZ**  
PINNEAPPLE  
**SKU:** 13017  
**CASE:** 24 UNITS



**TROPIQUE 24/16.9 OZ**  
SOURSOP  
**SKU:** 13014  
**CASE:** 24 UNITS







**YOGOVERA 12/1.5 LT**  
PINEAPPLE  
**SKU:** 11438  
**CASE:** 12 UNITS



**YOGOVERA 12/1.5 LT**  
MANGO  
**SKU:** 11435  
**CASE:** 12 UNITS



**YOGOVERA 20/500 ML**  
MANGO  
**SKU:** 11429  
**CASE:** 20 UNITS



**YOGOVERA 20/500 ML**  
WATERMELON  
**SKU:** 12757  
**CASE:** 20 UNITS



**COCA COLA 24/335 ML**  
LATA  
**SKU:** 13964  
**CASE:** 24 UNITS



**SODA COCA COLA 24/12 OZ**  
REGULAR  
**SKU:** 13262  
**CASE:** 24 UNITS



**JARRITO 24/12.5 OZ**  
MANDARIN  
**SKU:** 13022  
**CASE:** 24 UNITS



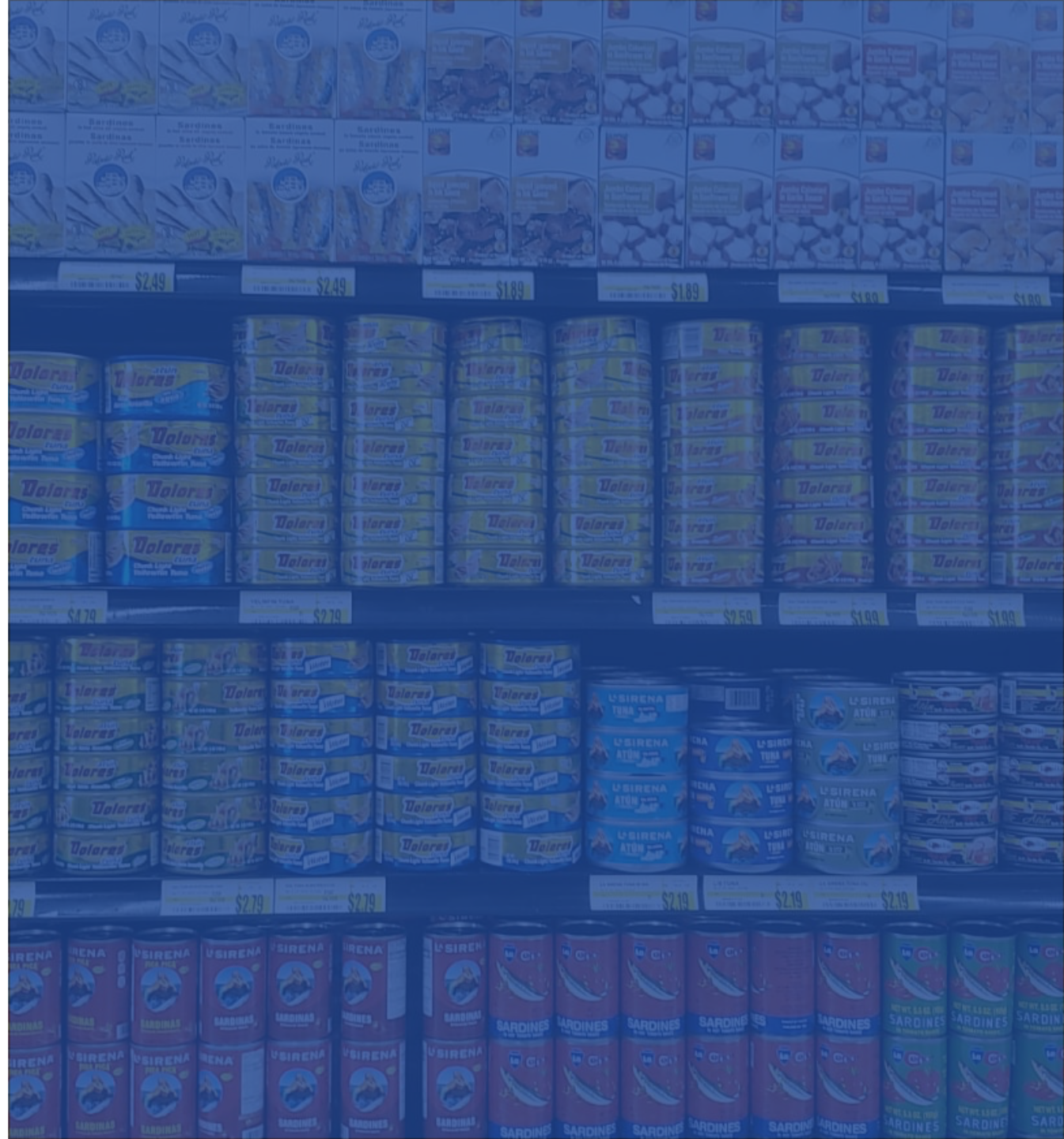
**JARRITO 24/12.5 OZ**  
TAMARINDO  
**SKU:** 13023  
**CASE:** 24 UNITS







# Grocery







**B&B 12/22.9 OZ**  
**HORCHATA**  
**SKU: 14086**  
**CASE: 12 UNITS**



**B&B 32/13.2 OZ**  
**MAYONESA (BAG)**  
**SKU: 14088**  
**CASE: 32 UNITS**



**B&B 32/13.7 OZ**  
**SALSA DE TOMATE (BAG)**  
**SKU: 14089**  
**CASE: 32 UNITS**



**B&B 24/6.2 OZ**  
**PICAMAS VERDE**  
**SKU: 14092**  
**CASE: 24 UNITS**



**CRUJI PAPAS 24/100 GR**  
**JALAPEÑO**  
**SKU: 14008**  
**CASE: 24 UNITS**



**CRUJI PAPAS 24/100 GR**  
**SALADAS**  
**SKU: 14007**  
**CASE: 24 UNITS**



**CACAHUATE JAPONES**  
**12/6/170 OZ UN BOLSA**  
**SKU: 13941**  
**CASE: 12 UNITS**



**MANZELA 10/10/160 GR**  
**JAPONES MANZELAZO**  
**SKU: 11478**  
**CASE: 10 UNITS**







**TOTIS 12/3.88 OZ**  
**DONITAS LIMÓN Y SAL**  
**SKU: 12157**  
**CASE: 12 UNITS**



**TOTIS 24/1.76 OZ**  
**DONITAS LIMÓN Y SAL**  
**SKU: 12159**  
**CASE: 24 UNITS**



**VAN HOLTEN'S 12 PZ**  
**PICKLE RICK**  
**SKU: 14005**  
**CASE: 12 UNITS**



**VAN HOLTEN'S 12 PZ**  
**PICKLE JUMBO TAPATIO**  
**SKU: 14002**  
**CASE: 12 UNITS**



**VAN HOLTEN'S 12 PZ**  
**PICKLE BIG PAPA**  
**SKU: 14003**  
**CASE: 12 UNITS**



**VAN HOLTEN'S 12 PZ**  
**PICKLE HOT MAMA**  
**SKU: 14004**  
**CASE: 12 UNITS**



**VAN HOLTEN'S 12 PZ PICKLE**  
**JUMBO SOUR POUCHED**  
**SKU: 14010**  
**CASE: 12 UNITS**



**LA COSTEÑA 12/26 OZ**  
**WHOLE JALAPEÑOS**  
**SKU: 12143**  
**CASE: 12 UNITS**

PEPPERS



CHILLI POWDER



**TAJIN 12/14 OZ**  
**SKU:** 10349  
**CASE:** 12 UNITS



**TAJIN 24/5 OZ**  
**SKU:** 10348  
**CASE:** 24 UNITS



**TAJIN 12/4.23 OZ**  
**ESCARCHADOR**  
**SKU:** 11285  
**CASE:** 24 UNITS

HOT SAUCES



**VALENTINA 12/34 OZ**  
**RED**  
**SKU:** 10016  
**CASE:** 12 UNITS



**VALENTINA 24/12 OZ**  
**RED**  
**SKU:** 10018  
**CASE:** 24 UNITS



**HUICHOL 12/6.5 OZ**  
**NEGRA**  
**SKU:** 13679  
**CASE:** 12 UNITS



**HUICHOL 12/6.5 OZ**  
**TRADICIONAL**  
**SKU:** 13681  
**CASE:** 12 UNITS

SAUCES



**LIZANO 12/23.7 OZ**  
**VEGETALES Y ESPECIAS**  
**SKU:** 13055  
**CASE:** 12 UNITS



**NATURAS 24/200 GR**  
**PASTA TOMATE**  
**SKU:** 13059  
**CASE:** 24 UNITS



**NATURAS 24/200 GR**  
**RANCHERA**  
**SKU:** 13056  
**CASE:** 24 UNITS







**NATURAS 24/200 GR**  
**SOFRITO CRIOLLO**  
**SKU: 13058**  
**CASE: 24 UNITS**



**NATURAS 24/200 GR**  
**SOFRITO JALAPEÑO**  
**SKU: 13894**  
**CASE: 24 UNITS**



**NATURAS 24/200 GR**  
**TOMATE CON QUESO**  
**SKU: 13057**  
**CASE: 24 UNITS**

MOLE



**LA VILLANA 6/1.12 LBS**  
**POBLANO TRADICIONAL**  
**SKU: 12991**  
**CASE: 6 UNITS**



**LA VILLANA 6/1.12 LBS**  
**RACHERO**  
**SKU: 12994**  
**CASE: 6 UNITS**

COOKING OIL



**LA VILLANA 6/1.12 LBS**  
**NEGRO**  
**SKU: 13054**  
**CASE: 6 UNITS**



**123 12/33.3 OZ**  
**ACEITE VEGETAL**  
**SKU: 13617**  
**CASE: 12 UNITS**



**123 24/16.9 OZ**  
**ACEITE VEGETAL**  
**SKU: 13619**  
**CASE: 24 UNITS**

SUGAR



**TROPIQUE 12/2 LBS**  
**TURBINADA**  
**SKU: 12337**  
**CASE: 12 UNITS**



**TROPIQUE 6/4 LBS**  
**TURBINADA**  
**SKU: 11425**  
**CASE: 6 UNITS**





GRAIN



**TROPIQUE 6/4 LBS**  
**DARK BULGUR WHEAT #3**  
**SKU: 10693**  
**CASE: 6 UNITS**

RICE



**ROSITA 10/5 LBS**  
**JASMINE**  
**SKU: 13961**  
**CASE: 10 UNITS**



**ROSITA 5/10 LBS**  
**JASMINE**  
**SKU: 13962**  
**CASE: 5 UNITS**



**KNORR 12/5.47 OZ**  
**MEXICANA**  
**SKU: 13985**  
**CASE: 12 UNITS**

CEREAL



**TROPIQUE 8/32 OZ**  
**INSTANT OATS**  
**SKU: 11607**  
**CASE: 8 UNITS**

HARINA



**TROPIQUE 6/4 LBS**  
**COARSE CORN MEAL**  
**SKU: 11186**  
**CASE: 6 UNITS**



**SELECTA 12/2 LBS**  
**REGULAR**  
**SKU: 11531**  
**CASE: 12 UNITS**



**SELECTA 8/5 LBS**  
**REGULAR**  
**SKU: 13076**  
**CASE: 8 UNITS**







**MASECA 10/4 LBS**  
REGULAR  
**SKU: 11525**  
**CASE: 10 UNITS**



**MASECA 10/4 LBS**  
TAMAL  
**SKU: 11526**  
**CASE: 10 UNITS**



**JUANA 10/2.2 LBS**  
WHITE CORN  
**SKU: 13595**  
**CASE: 10 UNITS**



**TORTIMASA 10/4 LBS**  
REGULAR  
**SKU: 11529**  
**CASE: 10 UNITS**

BEANS



**LA COSTEÑA 12/19.75 OZ**  
WHOLE BLACK  
**SKU: 12150**  
**CASE: 12 UNITS**



**LA COSTEÑA 12/20.5 OZ**  
REFRIED BLACK  
**SKU: 12153**  
**CASE: 12 UNITS**



**LA COSTEÑA 12/20.5 OZ**  
REFRIED PINTO  
**SKU: 12152**  
**CASE: 12 UNITS**



**NATURAS 12/28.22 OZ**  
REFRIED RED  
**SKU: 13143**  
**CASE: 12 UNITS**



**NATURAS 24/14.11 OZ**  
REFRIED RED  
**SKU: 13144**  
**CASE: 24 UNITS**



ATÚN



**DOLORES 24/10 OZ**  
 ACEITE  
 SKU: 10357  
 CASE: 24 UNITS



**DOLORES 48/5 OZ**  
 ACEITE  
 SKU: 10350  
 CASE: 48 UNITS



**DOLORES 24/10 OZ**  
 AGUA  
 SKU: 10358  
 CASE: 24 UNITS



**DOLORES 48/5 OZ**  
 AGUA  
 SKU: 10351  
 CASE: 48 UNITS

SARDINAS



**AVILES 24/15 OZ**  
 TOMATOE SAUCE  
 SKU: 13638  
 CASE: 24 UNITS

POWDER MIL



**NIDO 6/4.85 LBS**  
 KINDER 1+  
 SKU: 10794  
 CASE: 6 UNITS

CONDENSED MILK



**CLARABELLA 48/375 GR**  
 CONDENSED CREAMER  
 SKU: 10998  
 CASE: 48 UNITS





**BRONCOLIN HARD CANDY**  
**12/1.9 OZ HONEY LEMON**  
**SKU: 13574**  
**CASE: 12 UNITS**



**BRONCOLIN HARD CANDY**  
**12/60 PC ASSORTED FLAVORS POUCH**  
**SKU: 13943**  
**CASE: 12 UNITS**



**BRONCOLIN 12/18 PZ**  
**ASSORTED FLAVORS POUCH**  
**SKU: 13761**  
**CASE: 12 UNITS**



**HERBACIL 6/25 PZ**  
**PINEAPPLE**  
**SKU: 12902**  
**CASE: 6 UNITS**



**HERBACIL 6/25 PZ**  
**SOURSOP / GUANABANA**  
**SKU: 12894**  
**CASE: 6 UNITS**



**HERBACIL 6/25 PZ**  
**CHAMOMILE / ANISE**  
**SKU: 12882**  
**CASE: 6 UNITS**



**HERBACIL 6/25 PZ**  
**MANZANILLA / CHAMOMILE**  
**SKU: 12888**  
**CASE: 6 UNITS**

COFFEE



**LEGAL 6/6.3 OZ**  
DECAF  
**SKU:** 10346  
**CASE:** 6 UNITS



**LEGAL 6/6.3 OZ**  
REGULAR  
**SKU:** 10343  
**CASE:** 6 UNITS



**ORO 12/3.5 OZ**  
**SKU:** 10419  
**CASE:** 12 UNITS



**ORO 6/7 OZ**  
**SKU:** 10420  
**CASE:** 6 UNITS







# Home Care



DETERGENT



**BAR ZOTE 25/400 GR**  
**BLANCO**  
**SKU: 12731**  
**CASE: 25 UNITS**



**BLANCA NIEVES 10/4.4 LBS**  
**SKU: 13614**  
**CASE: 10 UNITS**



**FOCA 1/10 KG**  
**SKU: 12662**  
**CASE: 1 UNITS**



**FOCA 10/4.4 LBS**  
**SKU: 13620**  
**CASE: 10 UNITS**



**ARIEL 10/850 GR**  
**SKU: 11684**  
**CASE: 10 UNITS**



**ARIEL 12/750 GR**  
**WITH DOWNY**  
**SKU: 12061**  
**CASE: 12 UNITS**



**ARIEL 18/500 GR**  
**SKU: 10568**  
**CASE: 18 UNITS**



**ARIEL 36/250 GR**  
**SKU: 10647**  
**CASE: 36 UNITS**







**ARIEL DOWNY 6/105 OZ**  
(3KG)  
**SKU: 13752**  
**CASE: 6 UNITS**



**ROMA 22 LBS**  
**SKU: 13608**  
**CASE: 1 UNITS**



**ROMA 72/8.81 OZ**  
**SKU: 13611**  
**CASE: 72 UNITS**

DETERGENT LIQUID



**GAIN 6/25 OZ**  
**MOONLIGHT BREEZE**  
**SKU: 13465**  
**CASE: 6 UNITS**



**GAIN 6/25 OZ**  
**ORIGINAL**  
**SKU: 10734**  
**CASE: 6 UNITS**



**TIDE 6/25 OZ**  
**ORIGINAL**  
**SKU: 10733**  
**CASE: 6 UNITS**



FABRIC SOFTENER



**SUAVITEL 12/450 ML**  
**FRESCO AROMA DE SOL**  
**SKU: 10060**  
**CASE: 12 UNITS**



**SUAVITEL 12/450 ML**  
**FRESCA PRIMAVERA**  
**SKU: 10059**  
**CASE: 12 UNITS**



**SUAVITEL 4/3 LT**  
**FRESCA PRIMAVERA**  
**SKU: 10065**  
**CASE: 4 UNITS**



**SUAVITEL 12/850 ML**  
**PRIMAVERA**  
**SKU: 10063**  
**CASE: 24 UNITS**



**SUAVITEL 8.5 LT**  
**PRIMAVERAL DAILY CARE**  
**SKU: 11054**  
**CASE: 1 UNITS**



**DOWNY 9/750 ML LIBRE**  
**ENJUAGUE PASSION**  
**SKU: 11594**  
**CASE: 9 UNITS**



**DOWNY 9/750 ML LIBRE**  
**ENJUAGUE ROMANCE**  
**SKU: 11622**  
**CASE: 9 UNITS**



**DOWNY 9/800 ML LIBRE**  
**ENJUAGUE AROMA FLORAL**  
**SKU: 11593**  
**CASE: 9 UNITS**



**DOWNY 9/800 ML LIBRE**  
**ENJUAGUE BRISA FRESCA**  
**SKU: 11726**  
**CASE: 9 UNITS**

DISH SOAP PASTE



**DISH PASTE AXION 24/425**  
**GR LIMA LIMON**  
**SKU: 10044**  
**CASE: 24 UNITS**



DISH SOAP LIQUID



**SALVO 10/500 ML**  
LIMON  
**SKU:** 13940  
**CASE:** 10 UNITS



**SALVO 12/1.2 LT**  
LIMON  
**SKU:** 13690  
**CASE:** 12 UNITS



**AXION 12/400 ML**  
LIMON  
**SKU:** 10039  
**CASE:** 12 UNITS



**AXION 12/750 ML + 150 ML**  
FREE LIMON  
**SKU:** 10191  
**CASE:** 12 UNITS

TOILET PAPER



**PETALO 10/4/400**  
HD ULTRA RESIST  
**SKU:** 12738  
**CASE:** 10 UNITS



**PETALO 6/6/500**  
HD ULTRA RESIST  
**SKU:** 12739  
**CASE:** 6 UNITS

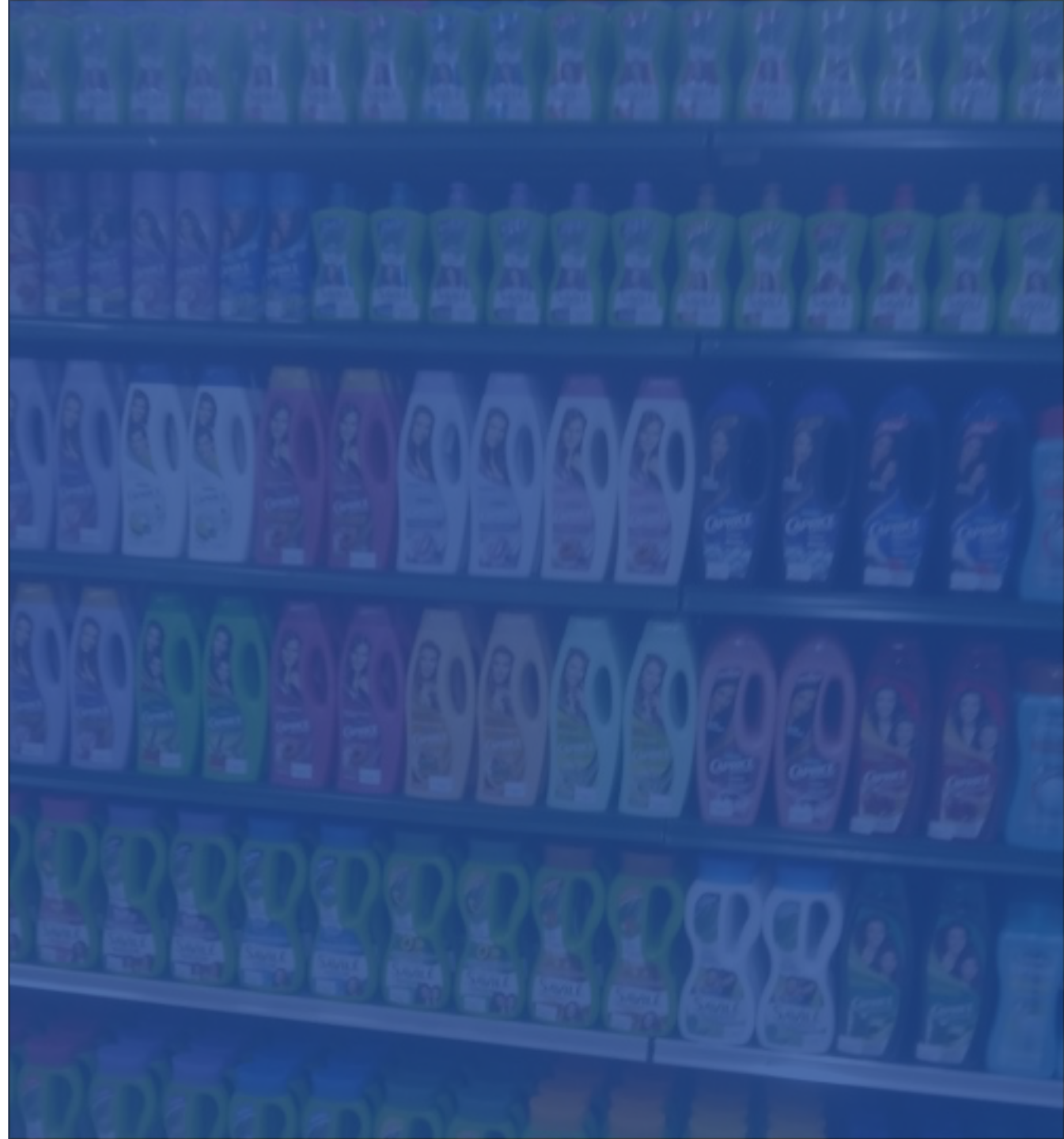


**VOGUE 10/4 UN 600 2P**  
SUPER GIGANTE  
**SKU:** 10541  
**CASE:** 10 UNITS





# Personal Care





FACE CREAM



**PONDS 3/100 GR**  
REJUVENESS DIA  
**SKU:** 13000  
**CASE:** 3 UNITS



**PONDS 3/100 GR S**  
HUMECTANTE NUTRITIVA  
**SKU:** 12999  
**CASE:** 3 UNITS



**PONDS 3/200 GR CR S**  
HUMECTANTE NUTRITIVA  
**SKU:** 12979  
**CASE:** 3 UNITS



**PONDS 3/400 GR CR S**  
HUMECTANTE NUTRITIVA  
**SKU:** 12848  
**CASE:** 3 UNITS

BODY CREAM



**HINDS 3/230 ML**  
CLASICA PIEL SECA ROSA  
**SKU:** 12937  
**CASE:** 3 UNITS



**NIVEA 3/400 ML NIVEA BODY MILK**  
NUTRITIVA PIEL EXTRA SECA  
**SKU:** 12453  
**CASE:** 3 UNITS



**NIVEA JAR 3/200 ML**  
TARRO  
**SKU:** 12977  
**CASE:** 3 UNITS

BODY SOAP



**PROTEX 6/127 GR**  
AVENA  
**SKU:** 13642  
**CASE:** 6 UNITS



**ZEST 6/135 GR**  
 LAVANDA  
**SKU:** 13140  
**CASE:** 6 UNITS



**ZEST 6/135 GR**  
 AQUA  
**SKU:** 12454  
**CASE:** 6 UNITS



**ZEST 6/135 GR FOR MEN**  
 FRESCURA MARINA  
**SKU:** 12455  
**CASE:** 6 UNITS



**PALMOLIVE NAT 6/120 GR**  
 LAVANDA Y CREMA  
**SKU:** 12948  
**CASE:** 6 UNITS



**PALMOLIVE NAT 8/8/120 GR**  
 ALOE Y OLIVA  
**SKU:** 13656  
**CASE:** 8 UNITS



**PALMOLIVE NAT 6/120 GR**  
 JALEA REAL  
**SKU:** 12949  
**CASE:** 6 UNITS







**HERBACIL 12/100 GR**  
ACTIVATED CARBON  
SKU: 12572  
CASE: 12 UNITS



**HERBACIL 12/100 GR**  
BAKING SODA  
SOAP  
SKU: 12573  
CASE: 12 UNITS

SHAMPOO



**SEDAL 3/620 ML**  
LISO PERFECTO  
SKU: 13365  
CASE: 3 UNITS



**SEDAL 3/620 ML**  
RIZOS DEFINIDOS  
SKU: 13364  
CASE: 3 UNITS



**CAPRICE ESP 3/750 ML**  
CONTROL CAIDA MAMEY  
SKU: 12808  
CASE: 3 UNITS



**CAPRICE ESP 3/750 ML**  
FUERZA ACTICERAMIDAS  
SKU: 12629  
CASE: 3 UNITS



**SAVILE CONTROL CASPA 3/700 ML**  
COCO Y ROMERO  
SKU: 13695  
CASE: 3 UNITS



**SAVILE CONTROL CASPA 3/700 ML**  
MENTA Y EUCALIPTO  
SKU: 13699  
CASE: 3 UNITS



HAIR CREAM



**SAVILE 3/300 ML CR PEINAR**  
**ALMENDRA RIZO**  
**SKU:** 12463  
**CASE:** 3 UNITS



**SAVILE 3/300 ML CR PEINAR**  
**KERATINA LISO**  
**SKU:** 12466  
**CASE:** 3 UNITS



**SEDAL 3/300 ML CR PEINAR**  
**CERAMIDAS**  
**SKU:** 12535  
**CASE:** 3 UNITS



**SEDAL 3/300 ML CR PEINAR**  
**RIZOS OBEDIENTES**  
**SKU:** 12492  
**CASE:** 3 UNITS



**GARNIER FRUCTIS 3/300 ML CR PEINAR**  
**BORRADOR DE DAÑO LARGO PERFECTO**  
**SKU:** 12927  
**CASE:** 3 UNITS



**GARNIER FRUCTIS 3/300 ML CR PEINAR**  
**BORRADOR DE DAÑO POST QUIMICA**  
**SKU:** 12838  
**CASE:** 3 UNITS



**GARNIER FRUCTIS 3/300 ML CR PEINAR**  
**OIL REPAIR LISO COCO**  
**SKU:** 12837  
**CASE:** 3 UNITS



**GARNIER FRUCTIS 3/300 ML**  
**CR PEINAR RIZOS ELASTICOS**  
**SKU:** 12836  
**CASE:** 3 UNITS



HAIR GEL



**MOCO DE GORILA  
SQUIZZ 12/340 GR GALAN**  
SKU: 10111  
CASE: 12 UNITS



**MOCO DE GORILA  
SQUIZZ 12/340 GR PUNK**  
SKU: 10112  
CASE: 12 UNITS



**XTREME 3/77.6 OZ  
CLEAR MACRO**  
SKU: 10370  
CASE: 3 UNITS



**XTREME 6/35.26 OZ  
CLEAR JUMBO**  
SKU: 10374  
CASE: 6 UNITS



**EGO 3/200 GR FOR MEN  
ALFA CONTROL CAIDA**  
SKU: 13770  
CASE: 3 UNITS



**EGO 3/200 GR  
MAGNETIC**  
SKU: 13771  
CASE: 3 UNITS



**EGO 3/450 GR  
BLACK**  
SKU: 13978  
CASE: 3 UNITS



**CREVEL DISTRIBUTION INC**  
Hanover, MD

[administration@creveleusa.com](mailto:administration@creveleusa.com)

Office: +1 443 873 6651

Whatsapp: +1 240 825 6325